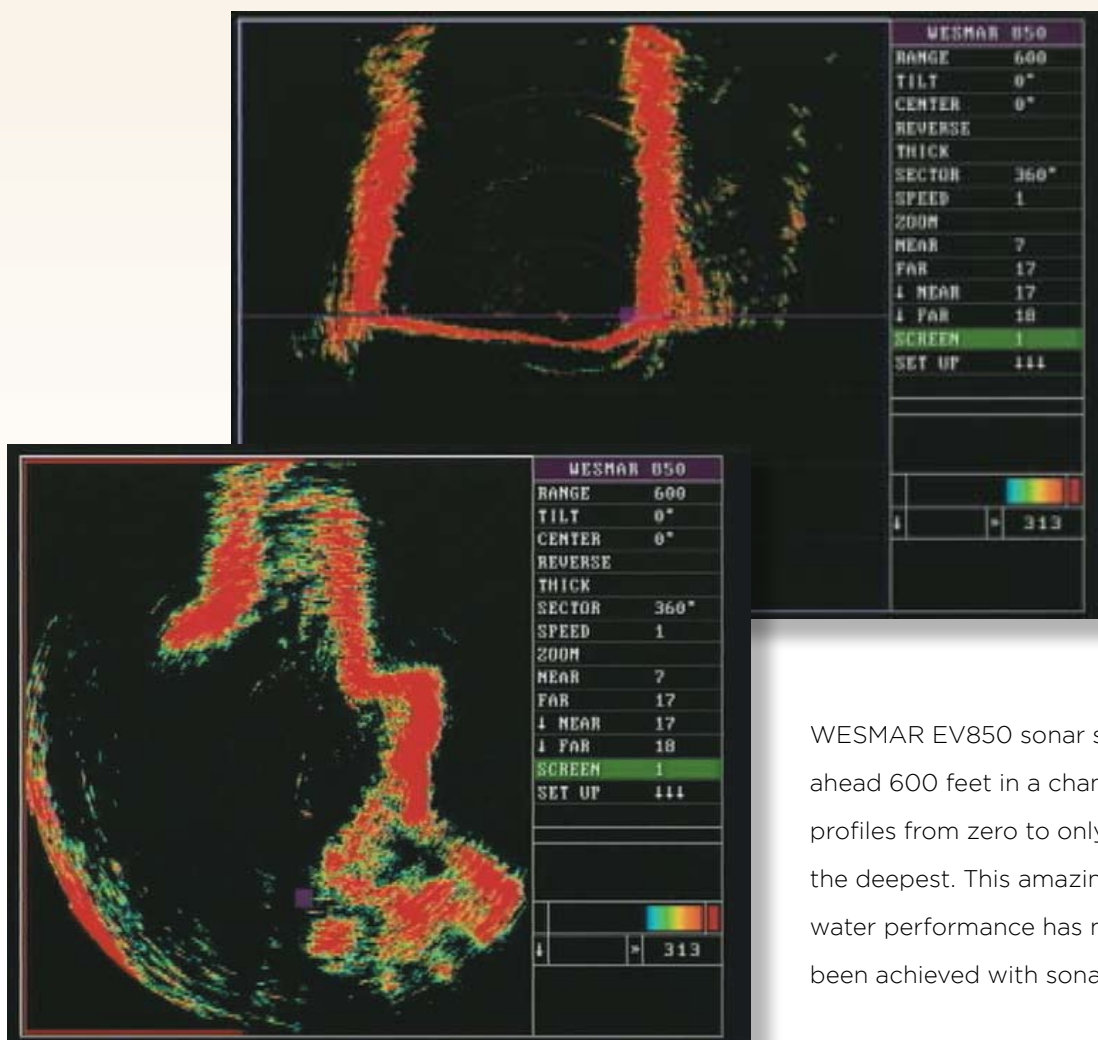




EV850 Series

Expedition Vessel Navigation and Security Sonar



WESMAR EV850 sonar scanning ahead 600 feet in a channel that profiles from zero to only 35 feet at the deepest. This amazing shallow water performance has never before been achieved with sonar.

AMAZING SHALLOW WATER PERFORMANCE

EXTREME NAVIGATION CAPABILITY





WESMAR's EV850 Expedition Sonar meets the navigation and security needs of all types of vessels traveling the oceans of the world...

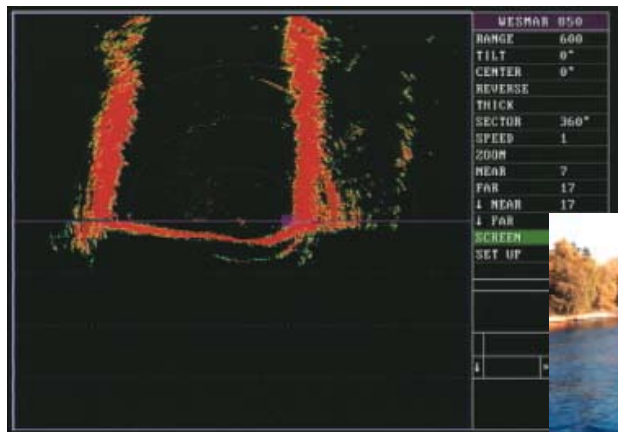
The EV850 protects your vessel investment with WESMAR sonar technology that has been proven in commercial fisheries and military deployments.

Features

High-performance, expedition-quality engineering

- Active electronic gyro-controlled stabilization capable of correcting for 34 degrees of movement per second.
- 110 kHz frequency has proven effective in numerous tests for both navigation and underwater intruder detection.
- New large array transducers have up to 30 percent more detection elements than conventional sonar with greater transmit power and receiving sensitivity.
- The interconnect between the sonar dome electronics and the bridge is digital and resistant to interference from vessel electrical noise as with conventional sonar, and thus, sonar gains can be operated at a high level for optimum target detection. In addition, the digital sonar will not interfere with other shipboard electronics.
- The system includes a unique 'power booster' system that supplies high voltage to the transmitter. This ensures a strong transmit pulse for maximum transfer of acoustic energy. System electronics operate from a second power supply that splits the load.
- Sonar operation is simplified through joystick operation. The sonar screen never leaves the monitor when making adjustments. This is important when avoiding hazards, or tracking divers.

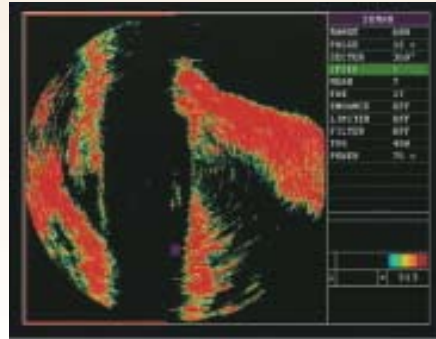
The EV850 provides excellent shallow water navigation through locks, marinas, and other shallow water areas.



Navigation

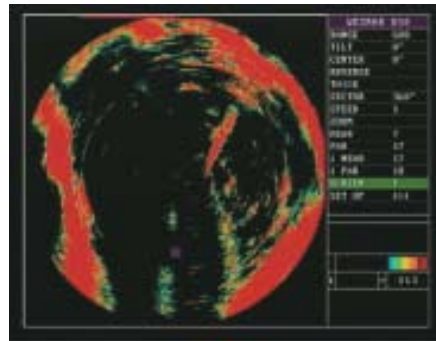
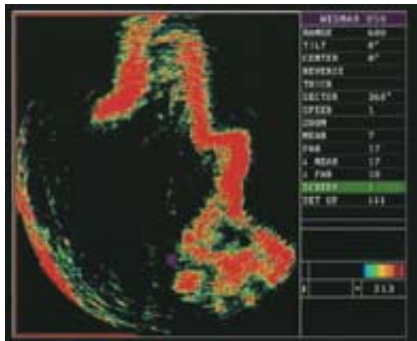
High definition and long ranges in shallow water

With WESMAR's advanced EV850 technology, you can monitor the waters around your vessel for safety and security 24 hours a day. The powerful narrow beam will depict underwater from the surface to bottom in detail and at ranges never before achieved. Among its many advances is electronic beam stabilization for steady, reliable target tracking even in rough water where other sonar are inoperable.



Navigate into unfamiliar harbors with a clear sonar picture of the channel, reefs and rocks

Cruising in the blind or with crude and unsuitable sonar is in the past. WESMAR's new EV850 will give you a sonar picture of the underwater, 360° around your vessel.



Before dropping the anchor, scan the moorage for suitable depth and obstacles to avoid grounding on a rock or shoal with falling tide.

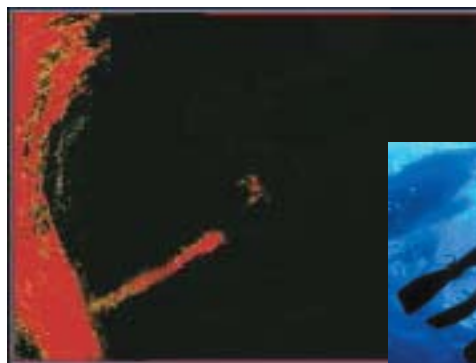
Security

Superior Security Detection

The nightwatch on most vessels, anchoring in unfamiliar and potentially dangerous harbors, is limited to surveillance of surface threats. During which, there is little possibility of detecting underwater intruders. The EV850 will detect and provide a sonar

track of divers hundreds, even thousands of feet away in some locations, providing early warning and time for response. A diver coming out of the water has much greater vulnerability to a forewarned deck watch.

Immediate detection of a diver moving underwater from shore 350 feet away toward an anchored vessel. Without the EV850 sonar, the vessel is unprotected.



EV850 Series

Specifications

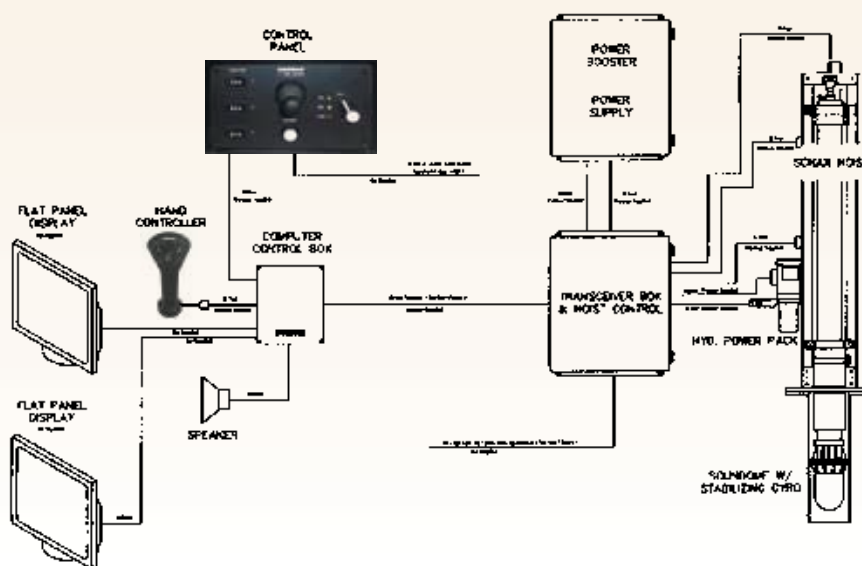
Sonar Features

EV850/110-8	Frequency	110 kHz
	Soundbeam (VxH deg)	5.2°x8.5°
	Maximum Range Scale (m)	1000
EV850/110-10	Frequency	110 kHz
	Soundbeam (VxH deg)	4.2°x5.4°
	Maximum Range Scale (m)	2000

Notes:

1. Pulsewidth is selectable or automatically adjusted with changes in the range scales.
2. Power boost is provided in all models.
3. The advanced profiling features are provided in all models.
4. Heavy duty hull package, increased transmit power and high-transmissivity soundome are provided in all models.

EV850 Block Diagram



PRODUCT WARRANTY

Commercial warranty and consumer limited warranty, disclaimer, and remedies. Seller warrants title, materials, and workmanship on equipment, except components manufactured by others for which seller assigns, as permitted, the original manufacturer's warranty. Seller's warranty period for all applicable express or implied warranties shall be ninety (90) days after installation or one (1) year after date of shipment to the original buyer, whichever time period expires first. Nonconforming equipment reported to seller during the applicable warranty period and returned to seller at buyer's expense and risk shall be repaired, or replaced at seller's option. If seller is unable or unwilling to repair or replace such reported and returned nonconforming equipment within a reasonable time, then buyer shall be entitled to a refund of the purchase price of the equipment as buyer's sole remedy. This paragraph sets forth buyer's exclusive remedies for nonconforming goods. This commercial warranty and consumer limited warranty is in lieu of all other warranties, express or implied, including design, course of dealing, merchantability, and fitness for a particular purpose. NOTE: LIMITATION OF SELLER'S COMMERCIAL AND CONSUMER LIABILITY. Seller shall not be liable on any claim for loss of use, revenue, or profit, for injury, or for any other incidental or consequential damages, regardless of the basis for buyer's claim(s), including, but not limited to, the law of contract, warranty, or tort. In no case shall seller's liability on any claim(s) exceed the amount paid to seller for the purchased goods.



WESMAR Western Marine Electronics

Telephone: (425) 481-2296 Fax: (425) 486-0909
E-mail: dpollon@wesmar.com www.wesmar.com